

NEWSLETTER

Vari-Plume Laboratory Exhaust Fans

The Cook Vari-Plume is a high plume lab dilution nozzle designed to assist in the dilution of laboratory exhaust and maximize plume rise. The Cook Vari-Plume is available in a mix flow design, model QMX-VP and a centrifugal design called a CA-VP. Both of these units are now licensed to bear the prestigious AMCA Certified Induced Flow Fan rating as based on AMCA 260. The Cook model TCNBLE is a self-contained cost-effective lab exhaust fan with an efficient nozzle design to safely propel fumes away from the building. The model TCNBLE is an excellent alternative to field built-up fan and stack assemblies. The self contained assembly can be supplied with a mixing plenum when by-pass air is necessary for additional dilution or increase plume height. The TCHBLE uses belt-driven tubular centrifugal fan housing for easy access for maintenance to interior fan components. All TCHBLE units are designed to withstand 125 mph wind loads without the use of guide wires, and are available as single, double or triple fan systems. The TCHBLE is licensed to bear the AMCA Seal under publication 211.



NEW FROM LOREN COOKS
VARI-PLUME LABORATORY
EXHAUST FANS



Loren Cook FanDrafter® for Autodesk® Revit MEP® 2009

Autodesk® Revit® families are available for every model and configuration of Loren Cook product. Each 3D parametric family is a full-scale

representation of the product and contains all sizes available for that model. Each family includes information on duct connection size,

electrical connection location, mounting holes (where applicable) as well as user defined attributes for airflow, static pressure, RPM,



STEPHANY ASSOCIATES

401 GRANT AVENUE
PITTSBURGH PA, 15209

PHONE: 412.821.7330
FAX: 412.821.7370

STEPHANY SUPPLY

3939 40TH & BUTLER
STREET
PITTSBURGH PA, 15201

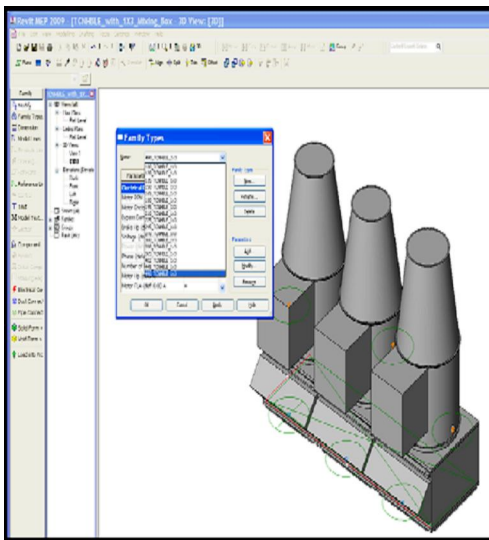
PHONE 1: 412.682.8008
PHONE 2: 412.682.3707
FAX: 412.682.8063

www.sai-hvac.com

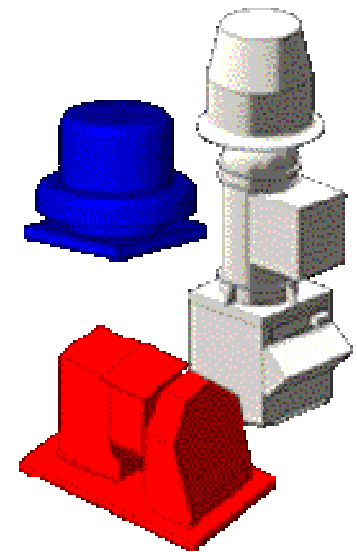
Loren Cook FanDrafter® for Autodesk® Revit MEP® 2009

horsepower,
voltage, phase, etc.

The files designed by Loren Cook are for use in Autodesk Revit MEP 2009 or later. The files are free to download and are intended to be inserted using the standard Mechanical Equipment placement commands. Each family will need to be loaded into the user's project prior to use. For additional information log on to www.lorencook.com, or contact us at Stephany Associates Inc. at any time.



**IMAGAES (LEFT, AND
RIGHT) ARE SNAP SHOTS
FROM LOREN COOKS NEW
FanDrafter® for Autodesk
® Revit MEP® 2009**



New Product Offering By Stephany Associates INC.

Stephany Associates Inc. is proud to announce our new radiant heating line produced from a leader in the infrared industry, Superior Radiant Products. This line of radiant products include single and two stage burners, straight stick infrared heaters from 30,000 Btu to 220,000 Btu, custom engineered VS vacuum model infrared systems with true modulation and multi zoning for commercial and industrial applications, specialty infrared heaters for garages, workshops, and light industrial applications. Also new to the line is the radiant patio heaters. These heaters provide 53,000 Btu of heat to a 24 radius and are equipped with Even Glo technology which creates over 50% more effective heating area than the comparative competitive models. For the construction side Superiors KA construction heater supplies up to 100,000 Btu of thermostatically controlled heat up to a 360 degree radius and can be as all Superiors products set up to accept natural gas or propane.

We at Stephany Associates Inc. are excited about our new partnership with Superior Radiant Products and look forward to servicing your infrared heat needs in the future with quality equipment and timely delivery from Superior Radiant Products.



Stephany Announcement

Stephany Associates, INC, a leading manufacturer's representative of HVAC Equipment is pleased to announce that Michael Blobner and Ryan Jordan have joined the Stephany family.

Michael comes to us with over twenty five years of experience in the HVAC industry. His background in estimating, project management and business ownership brings application knowledge for design build applications, labor and equipment insight for value engineering input, and extensive estimating background for the plan and spec market.

Ryan, was a 2008 intern at Stephany Associates Inc, and a May 2009 graduate of Thiel College. He brings with him a Bachelors degree in Business Administration. His recent fulfillment of factory training offered by the Price Corporation, Nailor Industries, Dynasonics, and the Loren Cook Corporation has enabled Ryan to offer up to date product sales information and estimating capabilities needed in this fast growing industry.



Stephany Associates, Inc.

NAME:

COMPANY:

PHONE:

FAX:

E-MAIL:

**PLEASE SEND ALL COMPLETED INFORMATION
TO:**

info@sai-hvac.com